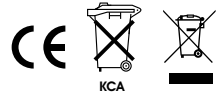
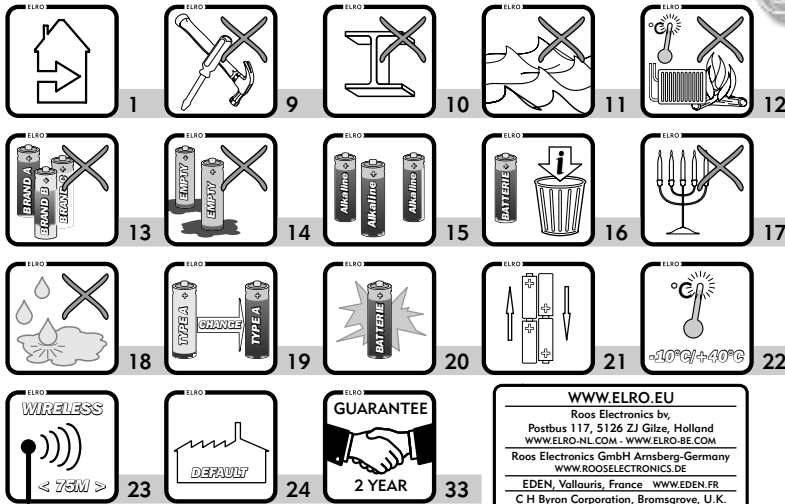


SAFETY INSTRUCTIONS!



DB210



WWW.ELRO.EU
 Roos Electronics by
 Postbus 117, 5126 ZJ Gilze, Holland
 WWW.ELRO-NL.COM - WWW.ELRO-BE.COM
 Roos Electronics GmbH Arnberg-Germany
 WWW.ROOSELECTRONICS.DE
 EDEN, Vallauris, France WWW.EDEN.FR
 C H Byron Corporation, Bromsgrove, U.K.
 WWW.CHBYRON.COM

DECLARATION OF CONFORMITY

Company **ROOS ELECTRONICS**
 Address, CityBroekakkerweg 15, 5126 BD
 PO Box115, 5126 ZJ GILZE
 Country The Netherlands

Declares that the product:
 Description Wireless door bell
 Product number **DB210** - Trade mark **ELRO**

Is herewith confirmed to comply with the requirements set in the Council Directive on the Approximation of the Member States relating to: Electro Magnetic Compatibility Directive(2004/108/EC) R&TTE Directive(1999/5/EC)- LVD Directive(2006/95/EC)

Assessment of compliance of the product with the requirements relating to EMC was based on the following standards:
EN 301 489-1 : v.1.4.1 - EN 301 489-3 : v.1.4.1

The requirements relating to Electrical Safety was based on the following standards: **IEC 62080:2001 & EN 60065:2002**

The requirements relating RF was based on the following standard:
EN 300 220-1 :v.1.3.1 - EN 300 220-3:v.1.1.1

DECLARATION DE CONFORMITE

Société **ROOS ELECTRONICS**
 Adresse/VilleBroekakkerweg 15, 5126 BD
 of Boite postale 115, 5126 ZJ GILZE
 PaysPays-Bas

Déclarons que le produit :
 DescriptionSonnette de porte sans fil
 Référence produit **DB210** - Marque de commercialisation **ELRO**

Est certifié conforme aux exigences définies dans la Directive du Conseil d'approximation des Etats Membres suivante: Compatibilité Electro magnétique(2004/108/CE) Directive R&TTE (1999/5/CE) - Directive Basse Tension(2006/95/CE)

L'évaluation de conformité du produit par rapport aux exigences de Compatibilité Electro Magnétique a été effectuée sur la base des normes suivantes :
EN 301 489-1 : v.1.4.1 - EN 301 489-3 : v.1.4.1

Les exigences Electriques surete ont été vérifiées par rapport a la norme suivante
IEC 62080:2001 & EN 60065:2002

Les exigences radio ont été vérifiées par rapport à la norme suivante :
EN 300 220-1 :v.1.3.1 - EN 300 220-3:v.1.1.1

KONFORMITÄTSERKLÄRUNG

Firma **ROOS ELECTRONICS**
 Adresse, Broekakkerweg 15, 5126 BD of Postbus 115,
 5126 ZJ GILZE
 Land Niederlande

Erklärung des Produktes:
 Artikelbeschreibung Türklingel drahtlos
 Artikel-Nr.: **DB210** - Markenname: **ELRO**

Hiermit bestätigen wir, um die Anforderungen aus den Richtlinien des Rates über die Annäherung der Mitgliedsstaaten zu befolgen, die Anerkennung folgender Richtlinien: Elektromagnetische Verträglichkeit (EMV)(2004/108/EG) R&TTE-Anforderung(1999/5/EG) -Niederspannungsrichtlinie (LVD)(2006/95/EG)

Die Bewertung des Produktes bezüglich der Anforderung bezüglich EMV basiert auf den folgenden Standards:
EN 301 489-1 : v.1.4.1 - EN 301 489-3 : v.1.4.1

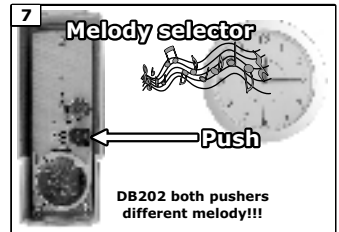
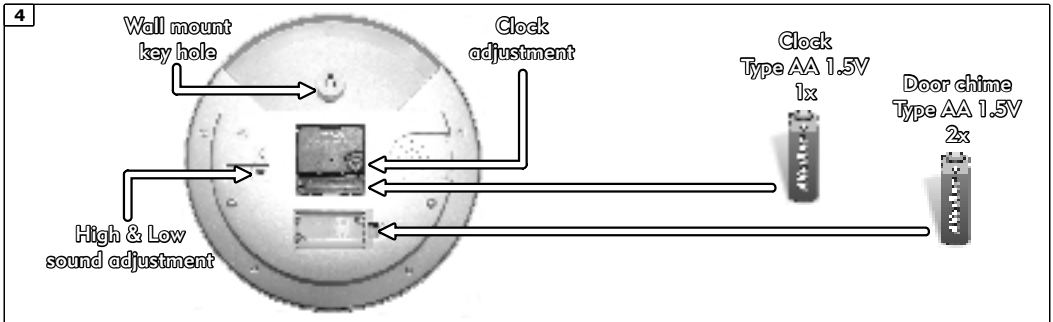
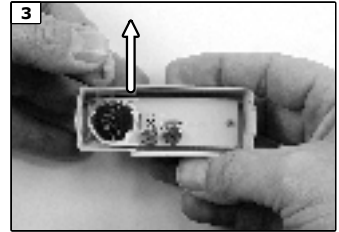
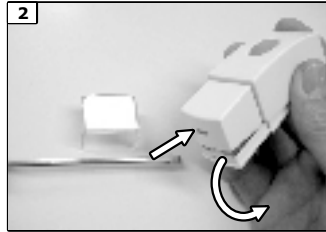
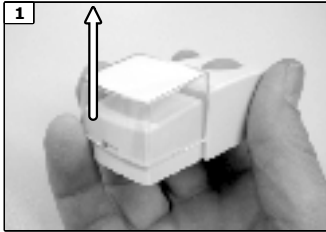
Die Anforderungen bezüglich Elektrisch Sicherheit basiert auf den folgenden Standards: **IEC 62080:2001 & EN 60065:2002**

Die Anforderungen bezüglich RF basiert auf den folgenden Standards:
EN 300 220-1:v.1.3.1 - EN 300 220-3:v.1.1.1

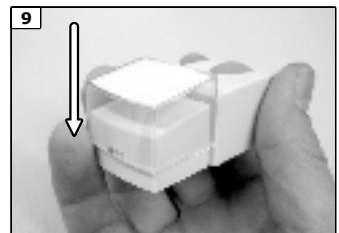
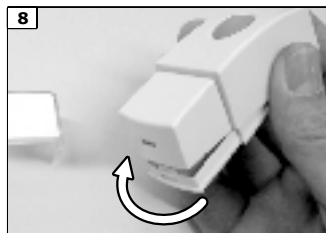
ELRO DB210 433MHz							
R&TTE APPROVED CE							
A	Å	IRL	Å	UK	Å	M	Å
B	Å	I	Å	BG	Å	N	Å
DK	Å	LL	Å	CZ	Å	SK	Å
FIN	Å	NL	Å	EST	Å	SLO	Å
F	Å	P	Å	H	Å	CH	Å
D	Å	E	Å	IS	Å	PL	Å
GR	Å	S	Å	LX	Å	RO	Å
LT	Å	S	Å	LX	Å	RO	Å
ROOS ELECTRONICS Gilze - Holland WWW.ELRO.EU Roos Electronics GmbH Arnberg, Germany www.rooselectronics.de EDEN, Vallauris, France www.eden.fr C H Byron Corporation, Bromsgrove, U.K. www.chbyron.com							

Authorized representative: **Mr. Ad Netten**
ROOS ELECTRONICS B.V.
 Postbus 117, 5126 ZJ Gilze
 Broekakkerweg 15, 5126 BD Gilze
 Tel: +31 (0) 43 455583 Fax: +31 (0) 43 455591

Date :13-08-2009



- 7a**
- Melody selector**
- PUSH**
1. Westminster Chime
 2. Ding-Dong Repeat
 3. Telephone Ring
 4. Circus Theme
 5. Banjo on my knee
 6. Twinkle - Twinkle
 7. It's a small world
 8. Dog Barking



CHANGE BATTERY PUSHER

